



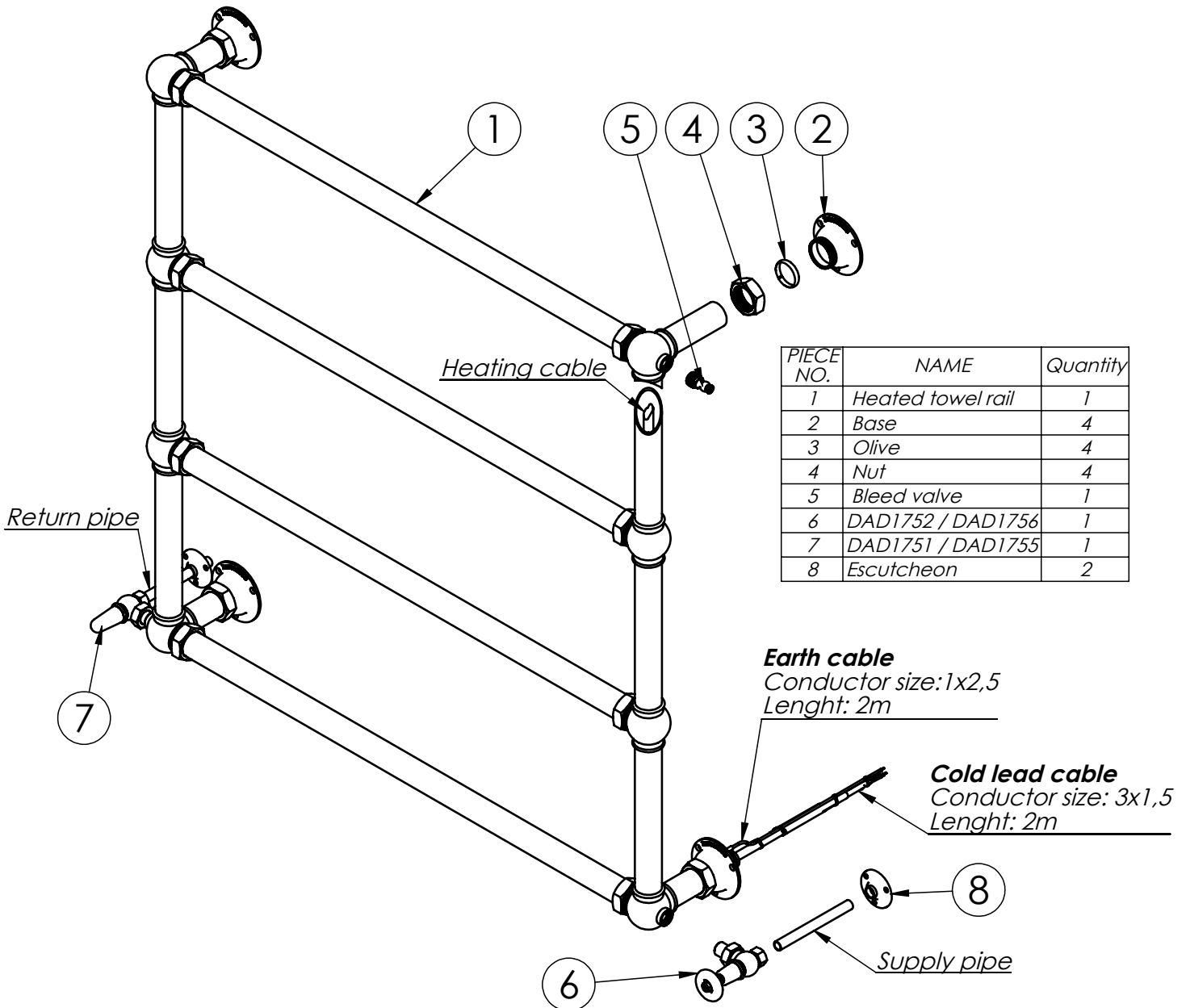
DESCRIPTION (HEATED TOWEL RAILS)

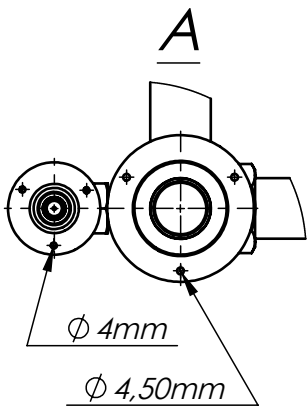
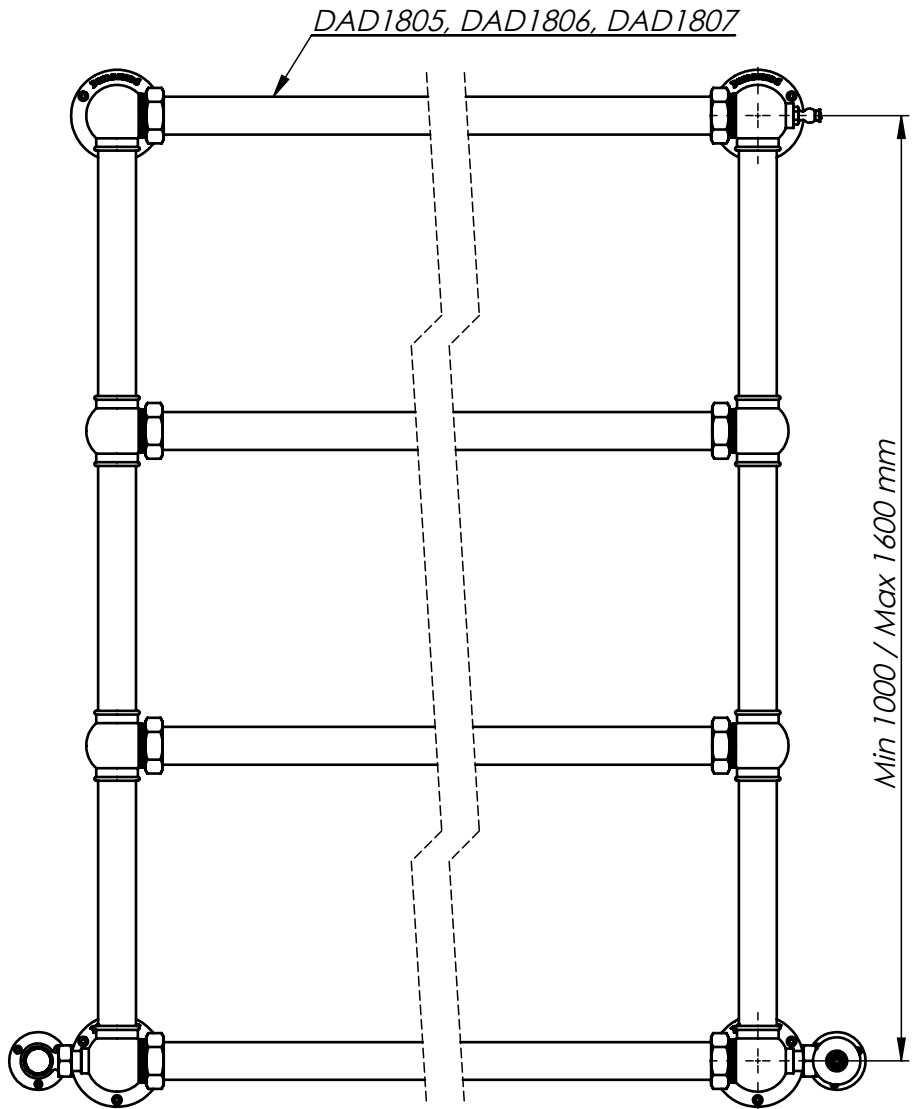
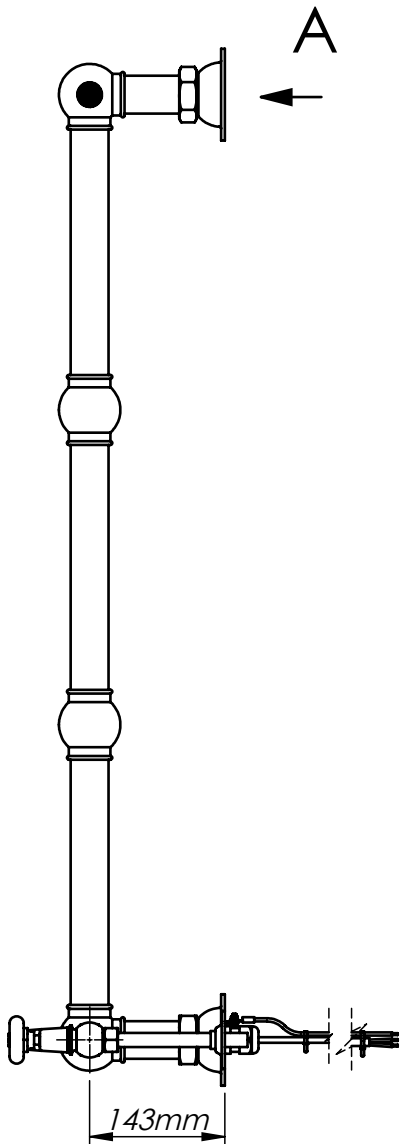
Stock No eg (DAD1805 / DAD1806 / DAD1807)

INSTALLATION INSTRUCTIONS FOR WALL MOUNTED HEATED TOWEL RAIL WITH HEATING CABLE

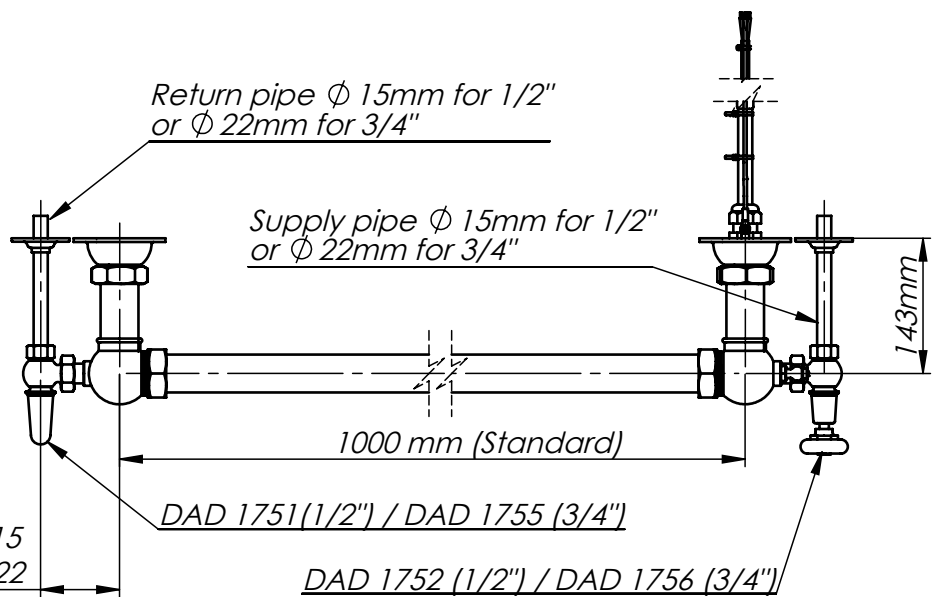
Important

- Please inspect this product immediately on delivery to ensure that it has not been damaged in transit and is complete. Any claim for damage or shortage will not be entertained unless received within 3 days.
- To ensure this product is installed properly, you must read and follow these guidelines.
- Please read the whole of these instructions before starting installation.
- Be sure your installation conforms to local regulations.
- We recommend that this product is installed by a professional contractor.
- Please refer to the specification and assembly drawings attached.
- Before installation, please inspect this product to ensure that it is the correct model and you have all the parts required for proper installation.
- Take all the necessary precautions to ensure that the fittings and other parts are properly protected during installation. Polished and plated surfaces are particularly prone to damage from dirty and incorrect tools.
- Use a 30-mA GLCB or RCD. Tyco Thermal Controls, international and local electrical codes, and standards all require the use of a ground-fault equipment protection device on each heating cable circuit. Arcing may not be stopped by conventional circuit breakers which could result in a fire hazard.
- Keep the heating cable ends dry before and during installation.
- Protect heating cable from mechanical damage.





85mm for pipe $\Phi 15$
95mm for pipe $\Phi 22$





Installation

1.

Note:- All screws provided are solid brass and will need to be predrilled.

Note:- If your towel rail is fitted with an electric element (dual fuel) it must be fitted by a qualified electrician. It should be fitted to a 2 or 3 amp fused spur fitted with a 30 milliamp RCD and be correctly earthed.

Care of Towel Rails:- All our towel rails are made of solid brass and are virtually maintenance free. However they should be cleaned using soapy water and dried with a soft cloth. Under no circumstances should any form of abrasive cleaner be used. Brass finish rails may have the shine restored using a proprietary polish such as Brasso. Plated rails may have the shine restored using a proprietary polish such as Silvo.

